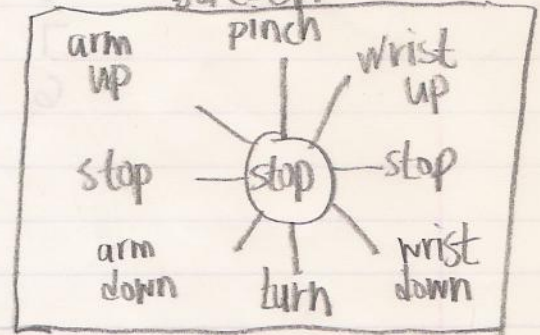
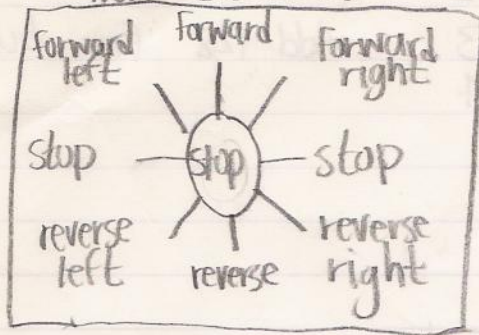


# Robot Arm Programmer - April 16, 1989



12 movements + 1 stop = 13 movements  
 need to Dim T(200), M(200) ← Time in tenths of second.

step ↗ ↘ movement

Space bar - starts and stops timing sequence

F1 - does recall

F3 - saves recall

F5 - loads recall

F7 - toggles real time mode

← - toggles autobraking

↓  
Robot De-activated  
Standby Mode On

ROBOT (3-times)

Standby Mode Off  
Robot Activated  
Main Menu

MOVE SELECT ROBOT

↓  
Select Menu

ROTATE ENTER DONE

Motor Direction Duration

ARM	WRIST	WHEEL [LEFT RIGHT BOTH]
UP DOWN	UP DOWN THrust CLAMP	FORWARD REVERSE
ROTATE	ENTER	DONE

↓

Group 1	POINT	ZERO	ONE	TWO
Group 2	THREE	FOUR	FIVE	SIX
Group 3	SEVEN	EIGHT	NINE	SCRATCH

Please Verify

YES	NO
-----	----